

# INSTALLATION INSTRUCTION

## LDW240 Series DIN Rail Power Supply



<b>LDW240-12</b>	INPUT: 200 – 500 VAC, 2.2 - 1.1 A (single, two or three phase switching power supply)
	OUTPUT: 12 - 15 VDC, 15 - 12 A
<b>LDW240-24</b>	INPUT: 200 – 500 VAC, 2.2 - 1.1 A (single, two or three phase switching power supply)
	OUTPUT: 24 VDC, 10 A
<b>LDW240-48P</b>	INPUT: 200 – 500 VAC, 2.2 - 1.1 A (single, two or three phase switching power supply)
	OUTPUT: 48 VDC, 5 A + ORing circuit
<b>LDW240-72P</b>	INPUT: 200 – 500 VAC, 2.2 - 1.1 A (single, two or three phase switching power supply)
	OUTPUT: 72 VDC, 3.5 A + ORing circuit

- MAIN FEATURES**
- Single, two or three phase input AC 187 – 550 VAC
  - Wide DC input range 250 – 725 VDC
  - High efficiency and compact size
  - Overload 150%
  - Up to 50°C operating temperature with no derating
  - Usable for broad range of industrial, telecom and renewable energy applications

READ THIS CAREFULLY BEFORE INSTALLATION!	VOR DER INSTALLATION BITTE FOLGENDE SICHERHEITSHINWEISE BEACHTEN!	LEGGERE ATTENTAMENTE PRIMA DELL'INSTALLAZIONE!	A LIRE ATTENTIVEMENT AVANT L'INSTALLATION!
<p>Before operating, read this document thoroughly and retain it for future reference. Non-respect of these instructions may reduce performances and safety of the devices and cause danger for people and property. The products must be installed, operated, serviced and maintained by qualified personnel in compliance with applicable standards and regulations. Do not open the device, it does not contain replaceable components, the tripping of the internal fuse (if included) is caused by an internal failure. Do not repair or modify the device, if malfunction or failure should occur during operation, send unit to the factory for inspection. No responsibility is assumed by Bel for any consequences deriving from the use of this material.</p>	<p>Lesen Sie dieses Dokument vor der Inbetriebnahme sorgfältig durch und bewahren Sie es zum späteren Nachschlagen auf. Die Nichtbeachtung dieser Anweisungen kann die Funktion und Sicherheit der Geräte beeinträchtigen und birgt Gefahren für Personen und Eigentum. Die Geräte müssen von qualifiziertem Personal unter Einhaltung der geltenden Normen und Vorschriften installiert, betrieben, gewartet und instand gehalten werden. Öffnen Sie das Gerät nicht, es enthält keine austauschbaren Komponenten, das Auslösen der internen Sicherung (falls vorhanden) ist stets auf tiefergehende Fehler im Schaltkreis zurück zu führen. Reparieren oder modifizieren Sie das Gerät nicht. Sollte während des Betriebs eine Fehlfunktion oder ein Defekt auftreten, schicken Sie das Gerät zur Überprüfung ins Werk. Bel übernimmt keine Haftung für die Folgen, die sich aus dem Einsatz dieses Gerätes ergeben.</p>	<p>Prima dell'installazione, leggere attentamente questo documento istruzioni e conservarle per future consultazioni. L'inosservanza delle presenti istruzioni può compromettere le caratteristiche e la sicurezza dell'apparecchio e causare pericolo per le persone e le cose. Il prodotto deve essere installato, utilizzato e riparato da personale qualificato e nel rispetto delle normative vigenti. Non aprire il prodotto, esso non contiene componenti sostituibili, il guasto del fusibile interno (se previsto) è causato da un guasto interno. Non tentare di riparare o modificare il prodotto, se durante il funzionamento si verificano guasti o anomalie, inviarlo al produttore per il controllo. Bel non si assume nessuna responsabilità per qualunque conseguenza derivante dall'uso di questo materiale.</p>	<p>Lire ces instructions avant l'installation, conserver ce manuel pour référence future. Défaüt de se conformer à ces instructions peut affecter les caractéristiques et la sécurité du dispositif, et causer du danger aux personnes ou aux biens. Les produits doivent être installés, exploités et entretenus par du personnel qualifié et en conformité avec les règlements. N'ouvrez pas le produit, il ne contient aucune pièce réparable, le déclenchement du fusible interne (le cas échéant) est causé par un défaut interne. Ne pas essayer de réparer ou modifier le produit ; si des défaillances se produisent pendant le fonctionnement, retourner le produit au fabricant pour inspection. Bel n'assume aucune responsabilité des conséquences éventuelles découlant de l'utilisation des produits.</p>
CAUTION	ACHTUNG	ATTENZIONE	AVERTISSEMENT
<p><b>RISK OF BURNS, EXPLOSION, FIRE, ELECTRICAL SHOCK, PERSONAL INJURY.</b> Never carry out work on live parts! Danger of fatal injury! The product's enclosure may be hot, allow time for cooling product before touching it. Do not allow liquids or foreign objects to enter into the products. To avoid sparks, do not connect or disconnect the device before having previously turned-off input power and wait for internal capacitors discharge (minimum 1 minute).</p>	<p><b>GEFAHR VON VERBRENNUNGEN, EXPLOSIONEN, FEUER, STROMSCHLAG, PERSONENSCHÄDEN.</b> Führen Sie niemals Arbeiten an spannungsführenden Teilen durch! Gefahr von tödlichen Verletzungen! Das Gehäuse des Gerätes kann heiß sein, lassen Sie Zeit zum Abkühlen des Gerätes, bevor Sie es berühren. Lassen Sie keine Flüssigkeiten oder Fremdkörper in die Geräte eindringen. Um Überschlüge zu vermeiden, schließen Sie das Gerät nicht an oder trennen Sie es nicht ohne vorher die Eingangsspannung abgeschaltet zu haben, und warten Sie die Entladung der internen Kondensatoren ab (mindestens 1 Minute).</p>	<p><b>RISCHIO USTIONI, ESPLOSIONE, INCENDIO, SCOSSA, LESIONI GRAVI.</b> Non effettuare mai operazioni sulle parti sotto tensione! Pericolo di lesioni letali! Il contenitore può scottare, lasciar quindi raffreddare il dispositivo prima di toccarlo. Non far entrare liquidi o oggetti estranei nel dispositivo. Per evitare scintille, non collegare o scollegare l'apparecchiatura prima di avere tolto tensione di ingresso e prima che sia avvenuta la scarica dei condensatori interni (min. 1 minuto).</p>	<p><b>RISQUE DE BRULURES, EXPLOSION, INCENDIE, ELECTROCUTION, DOMMAGE AUX PERSONNES.</b> Ne jamais effectuer des opérations sur les parties sous tension! Danger de mort! Le boîtier peut produire des brûlures, le laisser refroidir avant de toucher l'appareil. Ne faire pas pénétrer des liquides ou des corps étrangers dans l'appareil. Pour éviter des étincelles, ne pas connecter ou déconnecter l'équipement jusqu'à ce que la tension d'entrée a été supprimée et avant qu'il n'ait eut lieu la décharge des condensateurs internes (minimum 1 minute).</p>
INTENDED USE	BESTIMMUNGSGEMÄßER BETRIEB	USO PREVISTO	UTILISATION
<p>These are isolated devices suitable for <b>SELV</b> and <b>PELV</b> circuitry and are designed to be mounted on DIN rail and installed inside a protective enclosure. They are intended for general use such as in industrial control, communication, and instrumentation equipment. Do not use these devices in applications where malfunction may cause injury or death.</p>	<p>Es handelt sich um galvanisch getrennte Geräte, die für SELV- und PELV-Anwendungen geeignet sind und für die Montage auf DIN-Schienen und die Installation in einem Schutzgehäuse konzipiert sind. Sie sind für den allgemeinen Gebrauch wie z.B. in industriellen Steuer-, Kommunikations- und Automatisierung-Anwendungen vorgesehen. Verwenden Sie diese Geräte nicht in Anwendungen, bei denen eine Fehlfunktion zu Verletzungen oder zum Tod führen kann.</p>	<p>I dispositivi sono isolati, adatti per applicazioni <b>SELV</b> e <b>PELV</b>, sono dotati di aggancio per il montaggio su guida DIN all'interno di quadri elettrici o contenitori di protezione, per l'utilizzo con controllori industriali, unità di comunicazione o apparecchi di misura. Non utilizzare in applicazioni in cui un eventuale guasto può comportare rischio di lesioni o di morte.</p>	<p>Les produits sont isolés, appropriés pour les circuits <b>TBTS</b> et <b>TBTP</b> et sont équipés d'un crochet pour montage sur rail DIN dans des armoires ou conteneurs de protection, pour utilisation avec les contrôleurs industriels, des modules de communication ou des unités de mesure. Ne pas utiliser ces dispositifs dans une application où un dysfonctionnement pourrait entraîner le risque des blessures ou de mort.</p>
ENVIRONMENTAL CHARACTERISTICS	UMGEBUNGSBEDINGUNGEN	CARATTERISTICHE AMBIENTALI	CARACTÉRISTIQUES ENVIRONNEMENTALES
<p>Installation in a Pollution Degree 2 environment. Do not use in wet area or subject to moisture. Carefully recycle the product and related batteries according to local regulations.</p>	<p>Installation in einer Umgebung mit Verschmutzungsgrad 2. Nicht in nassen Bereichen oder unter Feuchtigkeit verwenden. Das Gerät und die zugehörigen Batterien sind entsprechend den lokalen Vorschriften zu recyceln bzw. zu entsorgen.</p>	<p>Usare in ambienti con Grado di Inquinamento 2. Non far funzionare l'apparecchio in un ambiente umido o soggetto a formazione di condensa. Riciclare il prodotto e le batterie collegate, nel rispetto delle normative locali vigenti.</p>	<p>Utiliser les produits dans des environnements avec degré de pollution 2. Ne pas employer l'appareil dans un environnement humide ou soumis à la condensation. Recycler les produits et les batteries, conformément à la réglementation locale.</p>

**USER INSTRUCTIONS****1) DESCRIPTION**

DIN rail mountable primary switched-mode power supply with 187...550 VAC (200...500 VAC UL certified) input or 250...725 VDC (300...500 VDC UL 508 certified / 250 – 600 VDC UL 62368-1 certified) input, suitable for single, two or three phases main line and DC line.

**2) INSTALLATION**

Use DIN-rails according to EN60715. Installation should be made vertically (see Fig.4). For better device stability fix the rail to the wall close to the point where the device is to be mounted. In order to guarantee sufficient convection, we recommend observing a minimum distance to other modules (see Fig.3).

The device is provided with a thermal protection; a limited air flow can cause the thermal protection tripping.

The SMPS automatically restarts after cooling. To get normal operation reduce the temperature of the air surrounding the power supply, increase the ventilation or reduce the load (see Fig.8)

**3) CONNECTIONS**

The device is equipped with screw terminal blocks. To avoid sparks, do not connect or disconnect the connectors before having previously turned-off input power and waited for internal capacitors discharge (minimum 1 minute)

In order to comply with UL certification, use appropriate copper cables of indicated cross section, designed for an operating temperatures of:

60°C for ambient up to 45°C

75°C for ambient up to 60°C

90°C for ambient up to 70°C

Strip the connecting ends of the wires according to the indication and ensure that all strands of a stranded wire enter the terminal connection (see Fig.5)

**4) INPUT PROTECTION**

The device input is provided with varistors against overvoltage. Input isn't provided with internal fuses; thus an external short circuit/overcurrent protection must be provided by the end user (see Fig.6).

For operation on a single-phase or 2 phases system, a protection fuse on each phases must be provided.

**Surge protection:** it is strongly recommended to provide external surge arresters (SPD) according to local regulations.

**5) AC INPUT CONNECTION**

The device can be connected to single phase AC line with rated  $V_{in}$  230 VAC or two or three phase line with rated  $V_{in}$  200 – 500 VAC (see Fig.7). Please connect first the PE.

**Input data (UL certified):**

	UL 508	UL 62368-1
Input AC rated voltage:	~200...500 VAC	~200...500 VAC
Input AC rated current:	2.2 – 1.1 A (1/2Ph) 1.5 – 0.8 A (3Ph)	2.2 – 1.6 A (1/2Ph) 1.5 – 0.8 A (3Ph)
Mains frequency:	50 – 60 Hz	50 – 60 Hz

**6) DC INPUT CONNECTION**

Connect L/L1 terminal to (+) positive pole, N/L2 terminal to (-) negative pole, L3 do not connected, and  $\oplus$  terminal to GND. Rated voltage 250 – 725 VDC.

The device is also suitable for photovoltaic or wind turbine applications (see Fig.7). For UL applications use up to 500 VDC (UL 508) or 600 VDC (UL 62368-1).

**7) OUTPUT CONNECTION**

The device is suitable for **SELV** and **PELV** circuitry. Pay attention LDW240-72P is not **SELV**.

$V_{out}$  can be adjusted with a potentiometer to a wide range (see Fig.1)

Check  $V_{out}$  before connecting the power supply to the load. With output voltage set to the max. value, the continuous [current x voltage] must not exceed the nominal power.

**8) PARALLEL CONNECTION AND REDUNDANCY**

Power supplies can be connected in parallel to increase power.

$V_{out}$  must be set uniformly ( $\pm 100$  mV) on each power supply and the wiring must be symmetrical to ensure an equal current distribution.

Models with "P" suffix have an integrated ORing circuit.

For redundant connection, use the Models "P" or an external isolating device must be used (see accessory device).

**9) OUTPUT PROTECTION**

The device is protected against overload (OL) / short circuit (SC) / overvoltage (OV) / overtemperature (OT).

**OL and SC:** are controlled by a hiccup mode auto-reset protection with the following behaviour.

**OL behaviour:** Max. OL =  $I_n \times 1.5$  with constant output voltage for max 5s. If the current is  $\geq I_n \times 1.5$  the unit enters the OL protection and starts an ON/OFF cycle (hiccup mode).

**SC behaviour:** the device supplies the indicated short circuit peak current for 250 ms if the output current exceeds  $I_n \times 1.5$  the device enters into a controlled ON/OFF cycles (hiccup mode). The output voltage drops to a voltage value depending on the impedance of the failed load circuit.

**Output OV circuit protection:** the output is protected against potential OV due to internal malfunction or coming from the load for

$V_{out} \geq V_{nom} \times 1.2 - 1.3$ , depending on the model.

**OT protection:** turns off the device if the internal temperature exceeds a safe limit. The device restarts automatically after cooling down. To recover to normal operation, reduce air temperature surrounding the power supply, increase cooling or reduce load (see Fig.8).

**10) FEEDING DC MOTORS**

It is possible to feed DC motors considering that when a motor starts-up under effort its consumption is much higher than the nominal current and it can trigger overcurrent protection (see accessory device).

**NOTE:** motors can generate high conducted noise on the DC line. Therefore, it is not recommended to feed on the same line motors and equipment sensitive to noise.

**11) OPERATION WITH BATTERY**

When a battery is connected in parallel to the Output for backup purposes (see accessory device).



**Manufacturer**  
Bel Fuse Inc.  
300 Executive Drive, Suite 300  
West Orange, NJ 07052  
USA

**Asia-Pacific**  
+86 755 2988 5888

**Europe, Middle East**  
+353 61 49 8941

**North America**  
+1 866 513 2839

[belfuse.com/power-solutions](http://belfuse.com/power-solutions)

© 2023 Bel Fuse Inc. BCM.00409\_AH

**12) ENVIRONMENTAL**

These products are IP20 (according to IEC 60529, UL not evaluated), and therefore chemicals/solvents, cleaning agents and other liquids must not be used.

**13) ENVIRONMENT**

These power supplies are SMPS for use in applications within a Pollution Degree 2, overvoltage category II environment (overvoltage category III according to EN 50178 and UL508). Do not use in wet area or subject to moisture. These products are designed for indoor use only. Carefully recycle the product and related batteries according to local regulations.

**14) INTENDED USE**

These are isolated devices suitable for SELV and PELV circuitry and are designed to be mounted on DIN rail and installed inside a protective enclosure. They are intended for general use such as in industrial control, communication, and instrumentation equipment. If the power supply is used in a way not specified in this instruction, the protection provided by the equipment may be impaired. Don't use these devices in applications where malfunction may cause injury or death.

**15) RADIO INTERFERENCE**

This is an electrical appliance according to EN 55032, class A. They may cause radio interference in residential areas.

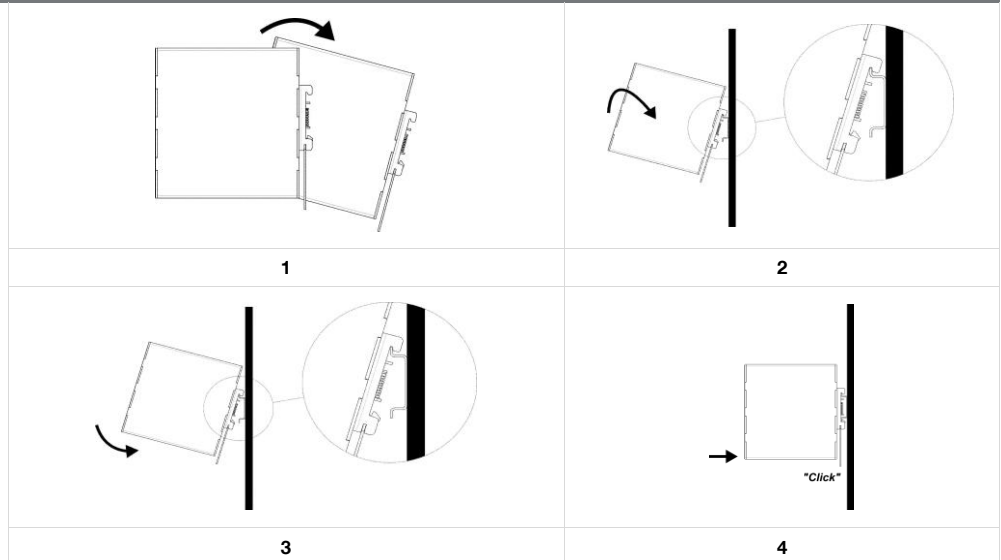
FIG.1 - CONNECTIONS		FIG.2 - DIMENSIONS		FIG.3 - DISTANCES	
<p>Just for reference</p>	<p>(1) AC/DC input                  (2) DC output (load)                  (3) Diagnostic Output (dry contact, NC output OK)                  (4) Green LED: Output OK                  (5) Red LED: overload                  (6) Output voltage adjustment</p>			<p><b>Dimension</b></p> <p>W D H</p>	<p><b>mm (inc)</b></p> <p>54 (2.12) 110 (4.33) 115 (4.52)</p>
	<p>Input AC Line:</p> <p>Single Phase</p> <ul style="list-style-type: none"> <li>L = Line</li> <li>N = Neutral</li> <li>L3 = do not connect</li> <li>⊕ = earth ground</li> </ul> <p>2 Phases</p> <ul style="list-style-type: none"> <li>L1 = Phase 1</li> <li>L2 = Phase 2</li> <li>L3 = do not connect</li> <li>⊕ = earth ground</li> </ul> <p>3 Phases</p> <ul style="list-style-type: none"> <li>L1 = Phase 1</li> <li>L2 = Phase 2</li> <li>L3 = Phase 3</li> <li>⊕ = earth ground</li> </ul>				
<p>Output:                  + = Positive DC / - = Negative DC / Dry contact = NC</p>					

**FIG.4 - MOUNTING / DISMOUNTING INSTRUCTIONS**

For DIN rail fastening according to IEC 60715 TH35-7.5(-15)  
 Mounting as shown in figure, with input terminals on lower side, with suitable cooling and maintaining a proper distance between adjacent devices as specified in the Installation Instruction of each family.

**MOUNTING:**

1. Tilt the unit slightly backwards.
2. Fit the unit over the top edge of the rail.
3. Slide it downward until it hits the stop.
4. Press against the bottom for locking.



**Manufacturer**  
 Bel Fuse Inc.  
 300 Executive Drive, Suite 300  
 West Orange, NJ 07052  
 USA

**Asia-Pacific**  
 +86 755 2988 5888

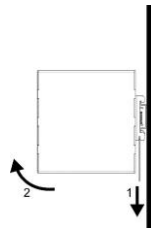
**Europe, Middle East**  
 +353 61 49 8941

**North America**  
 +1 866 513 2839

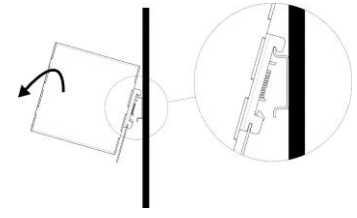
[belfuse.com/power-solutions](http://belfuse.com/power-solutions)

**DISMOUNTING:**

1. Pull down the slide clamp lever
2. Tilt the unit upward  
Unhook the unit from the rail



1 & 2

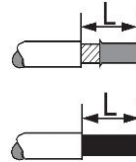


3

**FIG.5 - RECOMMENDED CONNECTING CABLE**



**Recommended Tightening torque**  
0.5 - 0.6 Nm  
4.42 - 5.30 lbf in



Solid: 2.5 mm<sup>2</sup> / 12 AWG  
Stranded: 1.5 mm<sup>2</sup> / 12 AWG  
L: 6.0 - 7.5 mm / 0.24 - 0.30 in

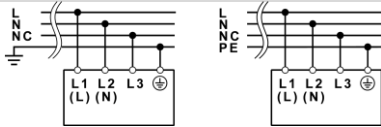
**FIG.6 - INPUT PROTECTION**

Fuse 6.3AT or MCB 6 A C curve or 4 A D curve.  
For USA and Canada, use the fuse type closest to the European equivalent type.

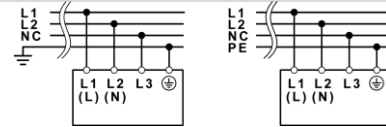
**Surge protection:** it is strongly recommended to provide external surge arresters (SPD) according to local regulations.

**FIG.7 - INPUT CONNECTIONS**

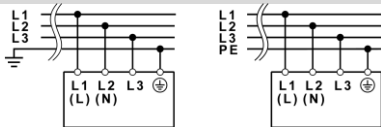
**AC LINE – SINGLE PHASE**



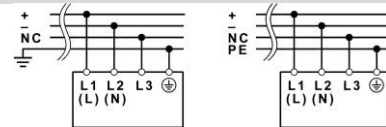
**AC LINE – TWO PHASES**



**AC LINE – THREE PHASES**



**DC LINE**



**FIG.8 - ENVIRONMENT**

**OPERATING TEMPERATURE**

- 40°C to + 70°C  
5 - 95% r.H. non condensing  
UL Certified up to 50°C  
Overtemperature protection  
UL certified up to 2000 m

**DERATING (UL not evaluated)**

- 4.2 W / °C over 50°C

**NOTES:**

- Data may change without prior notice in order to improve the product.
- Please refer to the latest version of the [Datasheet](#) or [Installation Instruction](#) for each product by visiting [belfuse.com/power-solutions](http://belfuse.com/power-solutions)

**ACCESSORIES**

- LDX-D50 50 A Active ORing controller
- LDX-U20 20 A High performance DC UPS
- LDX-C120 Battery charger and DC UPS Module
- LDX-L30 Sealed Lead acid Battery pack



**Manufacturer**  
Bel Fuse Inc.  
300 Executive Drive, Suite 300  
West Orange, NJ 07052  
USA

**Asia-Pacific**  
+86 755 2988 5888

**Europe, Middle East**  
+353 61 49 8941

**North America**  
+1 866 513 2839

[belfuse.com/power-solutions](http://belfuse.com/power-solutions)

© 2023 Bel Fuse Inc. BCM.00409\_AH