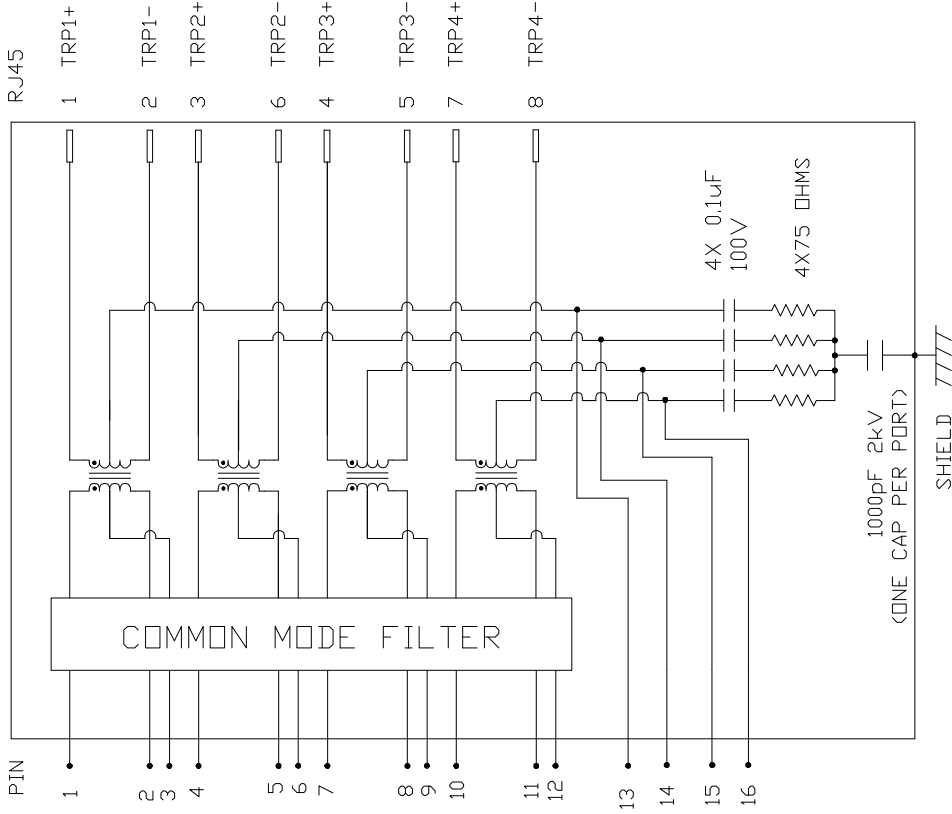


THE INFORMATION CONTAINED HEREIN IS CONSIDERED 'PROPRIETARY' TO BEL FUSE INC. AND SHALL NOT BE COPIED, REPRODUCED OR DISCLOSED WITHOUT THE WRITTEN APPROVAL OF BEL FUSE INC.



PRELIMINARY

SCHEMATIC



ELECTRICAL CHARACTERISTICS @ 25°C

TURNS RATIO  
 TP1 : 1CT  
 TP2 : 1CT  
 TP3 : 1CT  
 TP4 : 1CT  
 INS. LOSS (MAX)  
 1MHz TO 20MHz -0.8 dB  
 50MHz -1.0 dB  
 200MHz -1.2 dB  
 400MHz -2.0 dB  
 500MHz -3.0 dB  
 RET. LOSS (MIN) @ 100 OHMS  
 1MHz <math>f < 40\text{MHz}</math> 16 dB MIN  
 40MHz <math>f < 400\text{MHz}</math> 16-10LOG<math>(f/40\text{MHz})</math> dB  
 400MHz <math>f < 500\text{MHz}</math> 6-30LOG<math>(f/400\text{MHz})</math> dB  
 CM TO CM REJ  
 1MHz - 500MHz -25 dB MIN  
 CM TO DM REJ  
 1MHz - 500MHz -25 dB MIN  
 HIPOT (Isolation Voltage): 2250VDC  
 100% OF PRODUCTION TESTED TO COMPLY WITH IEEE 802.3 ISOLATION REQUIREMENTS.  
 BALANCED DC LINE CURRENT 600mA MAX, CONTINUOUS.  
 1:2A MAX. FOR 200 MILLISECONDS.  
 OPERATING TEMPERATURE: -40°C TO +85°C.

STANDARD DIM.	[ ] METRIC DIM.
TOL. IN INCH	AS REF.
.X	UNIT : INCH [mm]
.XX	SCALE : N/A
.XXX	SIZE : A4

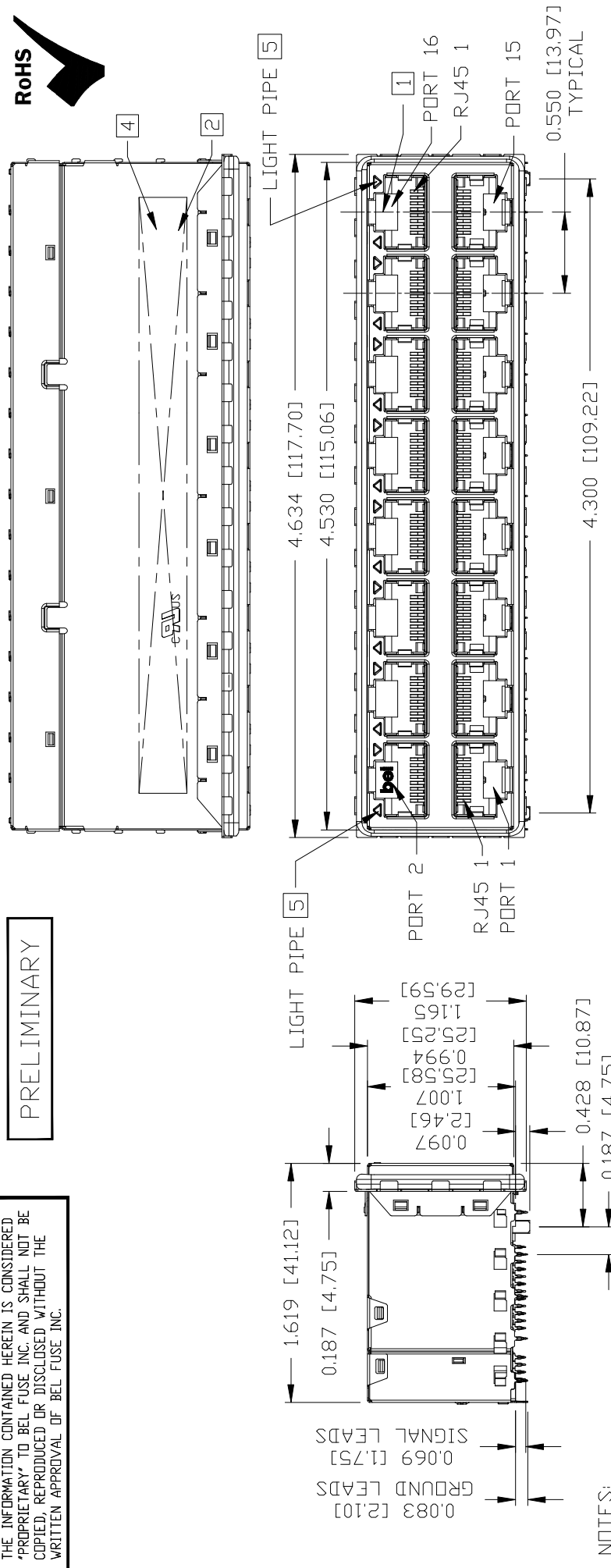
PART NO. / DRAWING NO.	G37-D8NV-011B
FILE NAME	G37-D8NV-011B_1.DWG

ORIGINATED BY	CHOW WANCHUNG	TITLE	2X8 10 Gigabit MagJack®
DATE	2023-08-14		4PPoE 60W
DRAWN BY	TERRY LIN		PRESS FIT
DATE	2023-8-14		PATENTED

DC002(2)120214 This document is electronically generated. This is a controlled copy if used internally

THE INFORMATION CONTAINED HEREIN IS CONSIDERED "PROPRIETARY" TO BEL FUSE INC. AND SHALL NOT BE COPIED, REPRODUCED OR DISCLOSED WITHOUT THE WRITTEN APPROVAL OF BEL FUSE INC.

PRELIMINARY



NOTES:

- 1. JACK CAVITY CONFORMS TO FCC RULES AND REGULATIONS, PART 68 SUBPART F.
- 2. MARK PART WITH MFG LOGO, NAME, PART NUMBER AND DATE CODE.
- 3. THE PRODUCT IS RoHS COMPLIANT.
- 4. THE PRODUCT IS PATENTED. "PATENTED" MARKING IS ON THE TOP SURFACE. THE PATENT NUMBER ARE U.S. PAT. 7,429,195 & U.S. PAT. 6,840,817 & U.S. PAT. 7,123,117 & U.S. PAT. 7,924,130.
- 5. THE FINISHED GOODS IS WITHOUT SMD LED. THE SMD LED IS PROVIDED BY CUSTOMER HERSELF. AND THE SMD LED IS MOUNTED ON CUSTOMER PCB.
- 6. RECOMMENDED MINIMUM CUSTOMER PCB THICKNESS IS 0.080 INCH.
- 7. DATUM C AND BASIC DIMENSION ESTABLISHED BY CUSTOMER.

RoHS UL RECOGNIZED - FILE #E169987.

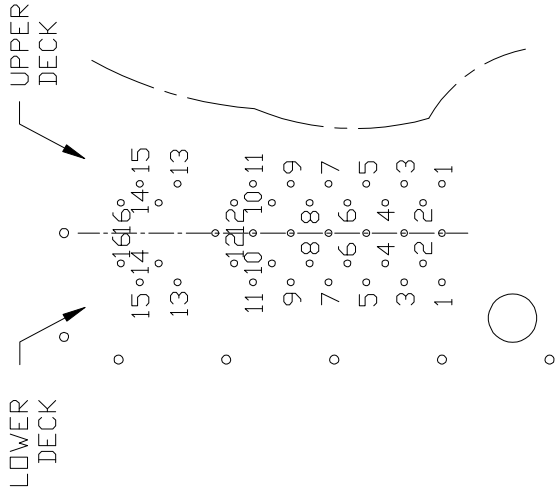
REV. : 1		PAGE : 3	
<b>ORIGINATED BY</b> TONY YUAN <b>DATE</b> 2023-08-14 <b>DRAWN BY</b> JARRY YE <b>DATE</b> 2023-8-14		<b>PART NO. / DRAWING NO.</b> G37-D8NV-011B <b>FILE NAME</b> G37-D8NV-011B_1.DWG	
<b>TITLE</b> 2X8 10 Gigabit MagJack® 4PPoE 60W PRESS FIT PATENTED		<b>STANDARD DIM.</b> TOL. IN INCH .X .XX .XXX ±0.010	
		[ ] METRIC DIM. AS REF. UNIT : INCH [mm] SCALE : N/A SIZE : A4	



THE INFORMATION CONTAINED HEREIN IS CONSIDERED 'PROPRIETARY' TO BEL FUSE INC. AND SHALL NOT BE COPIED, REPRODUCED OR DISCLOSED WITHOUT THE WRITTEN APPROVAL OF BEL FUSE INC.

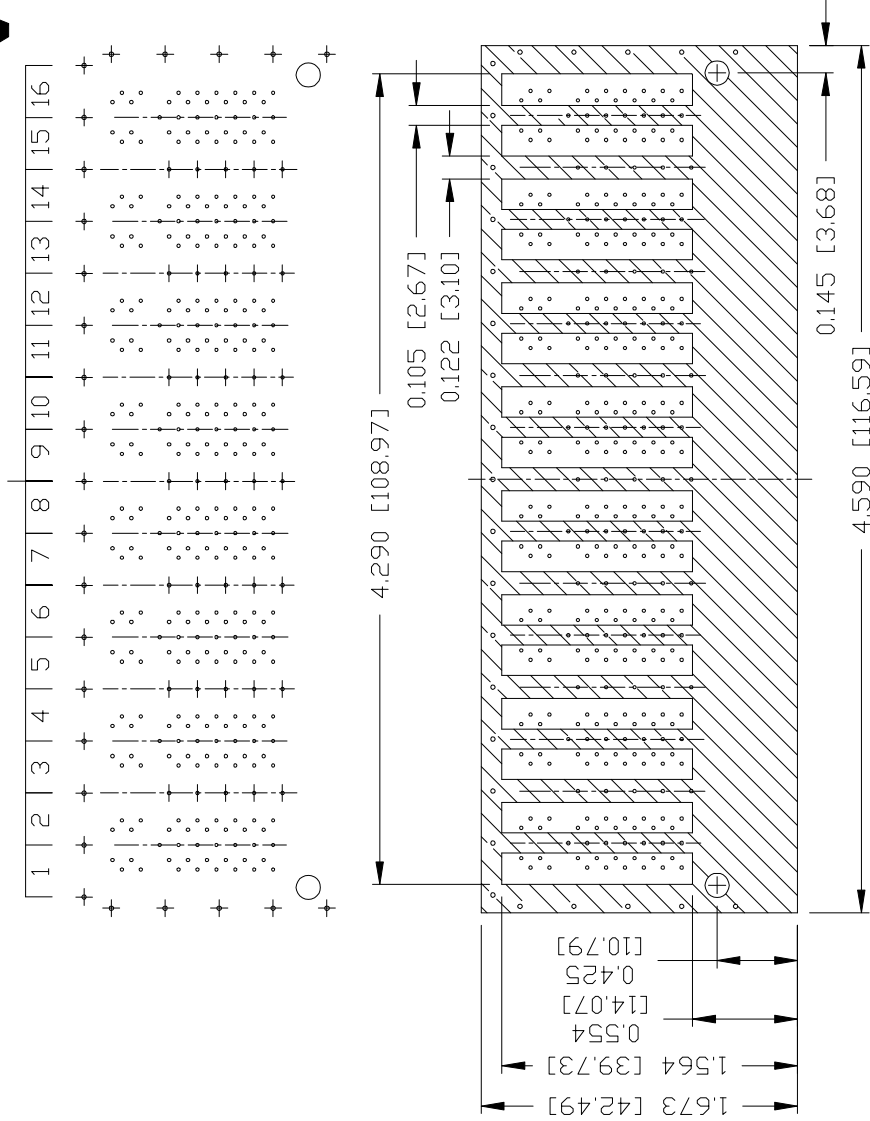
PRELIMINARY

PORT ASSIGNMENT  
(COMPONENT SIDE VIEW)



PIN-OUT INFORMATION  
(COMPONENT SIDE VIEW)

10	TRD4+
9	TRCT3
8	TRD3-
7	TRD3+
6	TRCT2
5	TRD2-
4	TRD2+
3	TRCT1
2	TRD1-
1	TRD1+

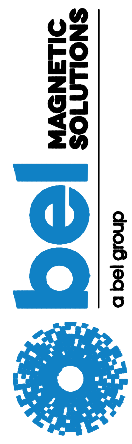


THE SHADED AREA ON THE CUSTOMER BOARD ARE RECOMMENDED TO BE CLEAR OFF ANY VIA HOLE OR COMPONENT PAD.

ORIGINATED BY TONY YUAN	TITLE 2X8 10 Gigabit MagJack®
DATE 2023-08-14	4PoE 60W
DRAWN BY JARRY YE	PRESS FIT
DATE 2023-8-14	PATENTED

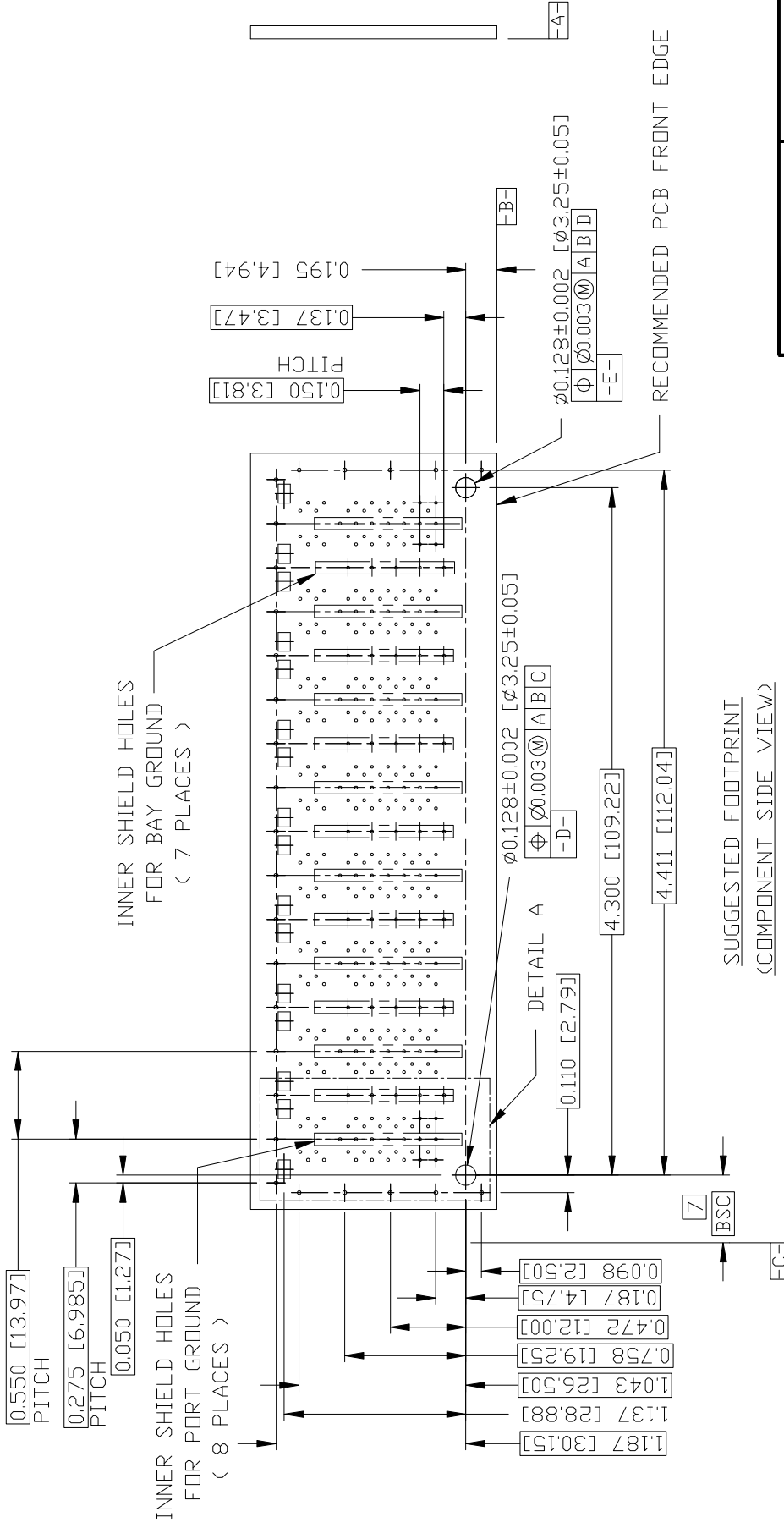
PART NO. / DRAWING NO. G37-D8NV-011B	STANDARD DIM. TOL. IN INCH	[ ] METRIC DIM. AS REF.
FILE NAME G37-D8NV-011B_1.DWG	.X	UNIT : INCH [mm]
	.XX	SCALE : N/A
	.XXX	±0.004
		SIZE : A4

REV. : 1 PAGE : 4



THE INFORMATION CONTAINED HEREIN IS CONSIDERED 'PROPRIETARY' TO BEL FUSE INC. AND SHALL NOT BE COPIED, REPRODUCED OR DISCLOSED WITHOUT THE WRITTEN APPROVAL OF BEL FUSE INC.

PRELIMINARY



SUGGESTED FOOTPRINT  
(COMPONENT SIDE VIEW)

REV. : 1 PAGE : 5

a bel group

STANDARD DIM.	[ ] METRIC DIM.
TOL. IN INCH	AS REF.
.X	UNIT : INCH [mm]
.XX	SCALE : N/A
.XXX	±0.004
	SIZE : A4

PART NO. / DRAWING NO.	G37-D8NV-011B
FILE NAME	G37-D8NV-011B_1.DWG

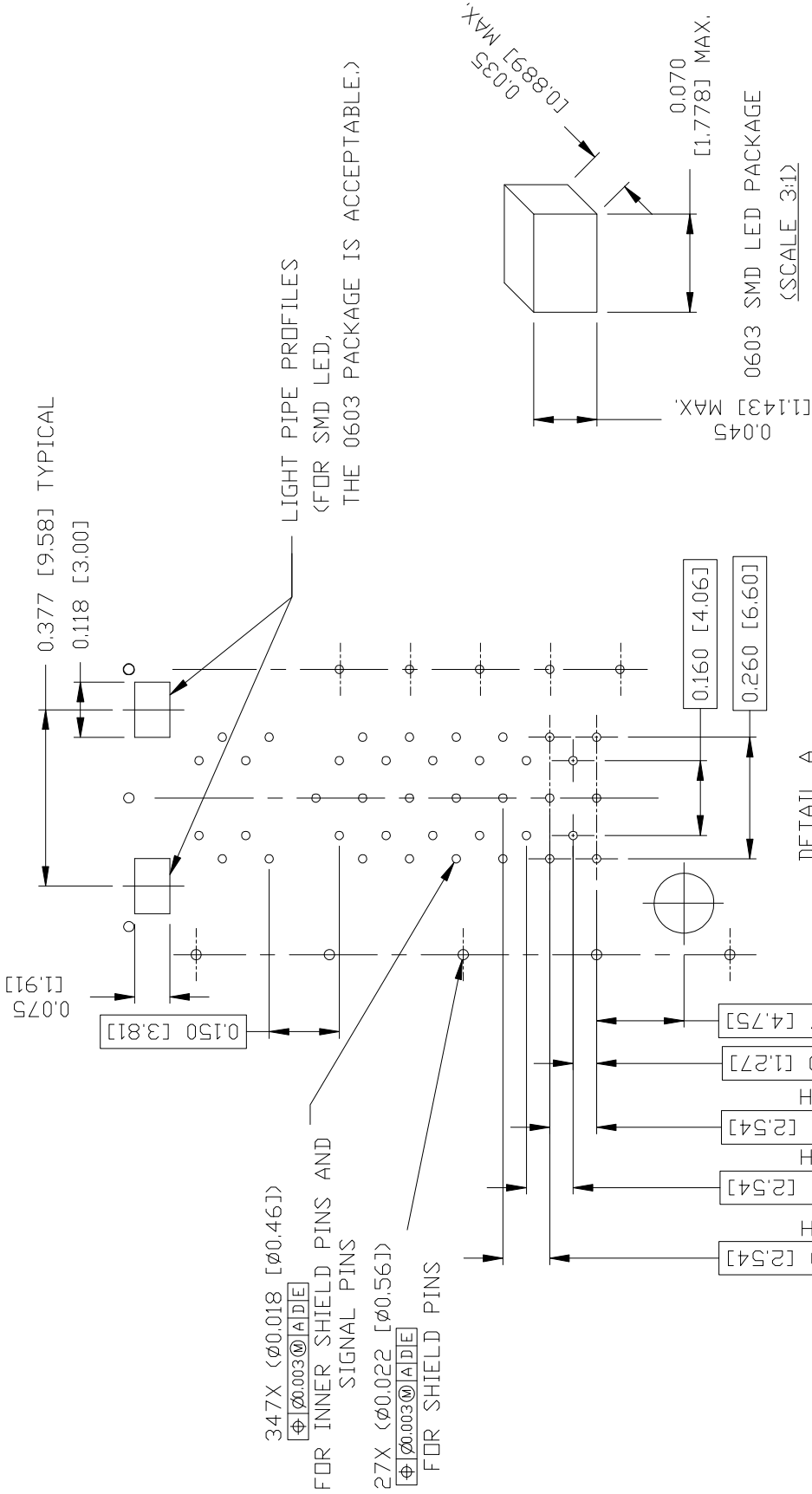
TITLE	2X8 10 Gigabit MagJack® 4PoE 60W PRESS FIT PATENTED
-------	--

ORIGINATED BY	TONY YUAN
DATE	2023-08-14
DRAWN BY	JARRY YE
DATE	2023-8-14

This document is electronically generated. This is a controlled copy if used internally

THE INFORMATION CONTAINED HEREIN IS CONSIDERED 'PROPRIETARY' TO BEL FUSE INC. AND SHALL NOT BE COPIED, REPRODUCED OR DISCLOSED WITHOUT THE WRITTEN APPROVAL OF BEL FUSE INC.

PRELIMINARY



LIGHT PIPE PROFILES  
(FOR SMD LED,  
THE 0603 PACKAGE IS ACCEPTABLE.)

347X (ø0.018 [ø0.46])  
[ø0.003][A][D][E]  
FOR INNER SHIELD PINS AND  
SIGNAL PINS

27X (ø0.022 [ø0.56])  
[ø0.003][A][D][E]  
FOR SHIELD PINS

REV. : 1		PAGE : 6	
STANDARD DIM. [ ] METRIC DIM. AS REF.		UNIT : INCH [mm]	
TOL. IN INCH		SCALE : N/A	
.X		SIZE : A4	
.XX			
.XXX	±0.004		
PART NO. / DRAWING NO. G37-D8NV-011B		FILE NAME G37-D8NV-011B_1.DWG	
TITLE 2X8 10 Gigabit MagJack® 4PPoE 60W PRESS FIT PATENTED			
ORIGINATED BY TONY YUAN		DATE 2023-08-14	
DRAWN BY JARRY YE		DATE 2023-8-14	

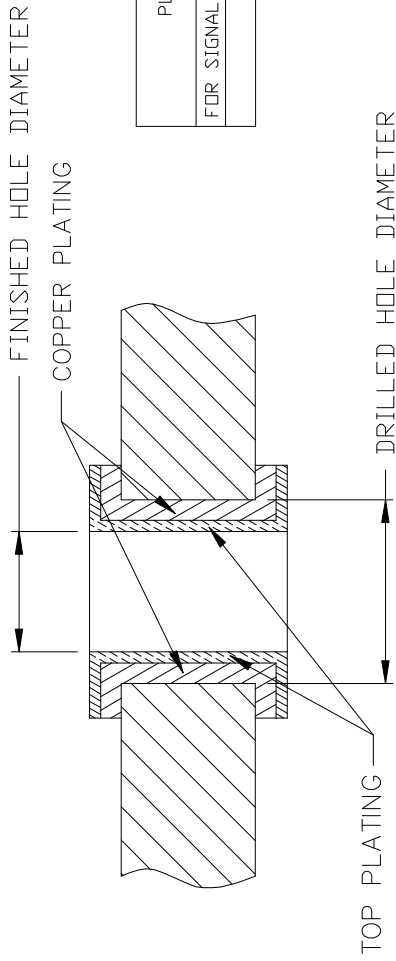
This document is electronically generated. This is a controlled copy if used internally



DC002(2)120214

THE INFORMATION CONTAINED HEREIN IS CONSIDERED 'PROPRIETARY' TO BEL FUSE INC. AND SHALL NOT BE COPIED, REPRODUCED OR DISCLOSED WITHOUT THE WRITTEN APPROVAL OF BEL FUSE INC.

PRELIMINARY



PLATED-THROUGH-HOLE	DRILLED HOLE DIAMETER	FINISHED HOLE DIAMETER
FOR SIGNAL PINS AND INNER SHIELD PINS	0.022 [0.57]	<0.018 [0.46]> REF
FOR SHIELD PINS	0.026 [0.66]	<0.022 [0.56]> REF

PLATED-THROUGH-HOLE CROSS-SECTION

PLATING	THICKNESS IN MICRO-INCHES [MICRONS]
COPPER	1000-2000 [25-50]
TOP PLATING - USE ONE OPTION LISTED BELOW:	
HOT AIR SOLDER LEVELING (HASL) TIN-LEAD (Sn-Pb)	160-400 [4-10]
IMMERSION TIN (Sn)	20-40 [0.5-1.0]
ORGANIC SOLDERABILITY PRESERVATIVE (OSP)	10-20 [0.2-0.5]
IMMERSION GOLD (Au) OVER NICKEL (Ni) (ENIG)	5-20 [0.1-0.5] (Au) OVER 50-100 [1.2-2.5] (Ni)
TIN-LEAD (Sn-Pb)	400-1000 [10-25]
IMMERSION SILVER (Ag)	5-8 [0.10-0.15]

RECOMMENDED PLATED-THROUGH-HOLE CONSTRUCTION DETAILS FOR PRESS-FIT PINS

<b>ORIGINATED BY</b> TONY YUAN <b>DATE</b> 2023-08-14 <b>DRAWN BY</b> JARRY YE <b>DATE</b> 2023-8-14	<b>TITLE</b> 2X8 10 Gigabit MagJack® 4PPoE 60W PRESS FIT PATENTED	<b>PART NO. / DRAWING NO.</b> G37-D8NV-011B <b>FILE NAME</b> G37-D8NV-011B_1.DWG	<b>STANDARD DIM. AS REF.</b> [ ] METRIC DIM. [ ] INCH REF.
		<b>UNIT : INCH [mm]</b> SCALE : N/A	<b>SIZE : A4</b>

REV. : 1 PAGE : 7

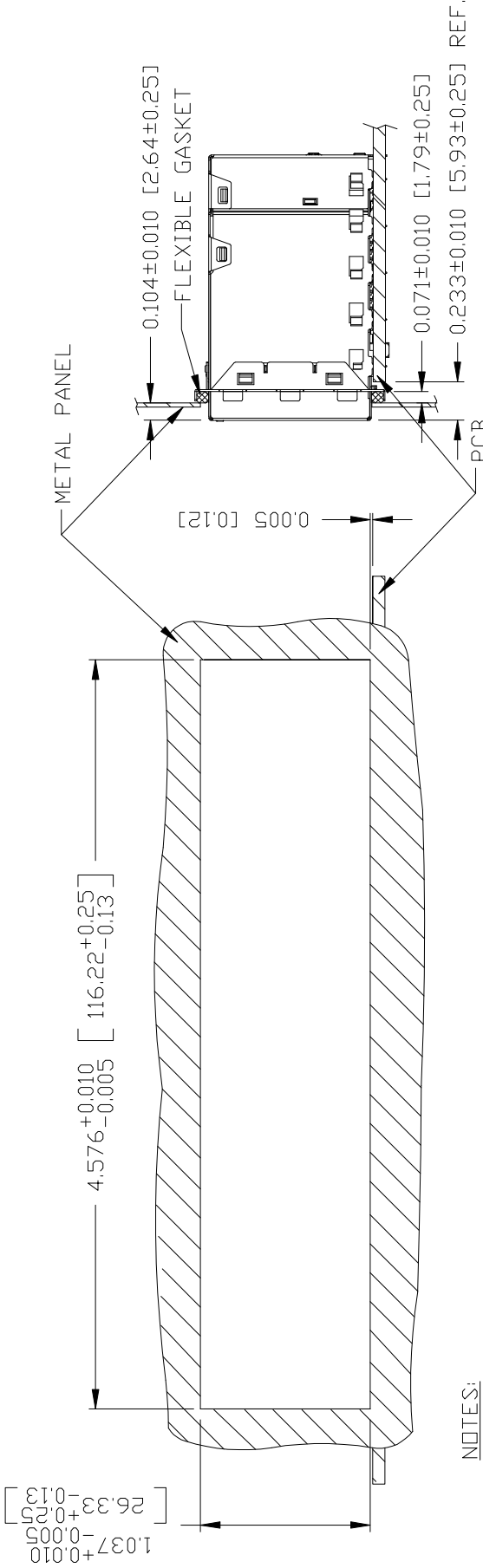


This document is electronically generated. This is a controlled copy if used internally

THE INFORMATION CONTAINED HEREIN IS CONSIDERED 'PROPRIETARY' TO BEL FUSE INC. AND SHALL NOT BE COPIED, REPRODUCED OR DISCLOSED WITHOUT THE WRITTEN APPROVAL OF BEL FUSE INC.

PRELIMINARY

SUGGESTED PANEL OPENING



NOTES:

1. THE DISTANCE OF PANEL INSIDE SURFACE RELATIVE TO FRONT SURFACE OF PART IS ONLY A SUGGESTION. IN CASE THIS DISTANCE IS DIFFERENT, THE REQUIRED PANEL OPENING DIMENSIONS CHANGE ACCORDINGLY.
2. RECOMMENDED COMPRESSION OF THE FLEXIBLE GASKET MATERIAL OF 25%.
3. RECOMMENDED FLEXIBLE GASKET THICKNESS BEFORE COMPRESSION IS 0.103 INCH.
4. THE FLEXIBLE GASKET CAN BE ORDERD SEPARATELY VIA PART NUMBER 0080M1700-05.

PACKING INFORMATION

PACKING TRAY : 0200M9999-M1 (TOP)  
 0200M9999-R9 (BOTTOM)

PACKING QUANTITY : 6 PCS FINISHED GOODS PER TRAY.  
 7 TRAYS (42 PCS FINISHED GOODS) PER CARTON BOX.

REMARK : CARDBOARDS ARE PLACED BETWEEN LAYERS OF PACKING TRAY INSIDE CARTON BOX.  
 (INCLUDE THE UPPERMOST AND LOWERMOST TRAY)

REV. :	1	PAGE :	8
a bel group			

ORIGINATED BY TONY YUAN	PART NO. / DRAWING NO. G37-D8NV-011B	STANDARD DIM. TOL. IN INCH	[ ] METRIC DIM. AS REF.
DATE 2023-08-14	FILE NAME G37-D8NV-011B_1.DWG	.X	UNIT : INCH [mm]
DRAWN BY JARRY YE		.XX	SCALE : N/A
DATE 2023-8-14		.XXX	SIZE : A4
TITLE 2X8 10 Gigabit MagJack® 4PPoE 60W PRESS FIT PATENTED		±0.005	