

LFWLP225-CK COVER KIT



Features

- Noncorrosive
- Easy assembly
- Low weight
- Fully safe

FOR WLP225, MWLP225 SERIES

Derating Guidelines

WLP225/MWLP225: De-rate to 70% of values mentioned in temperature de-rating curves of open frame models at all load and ambient conditions.

Contents

Mounting Base, Cover, Insulator, Fixing Screws

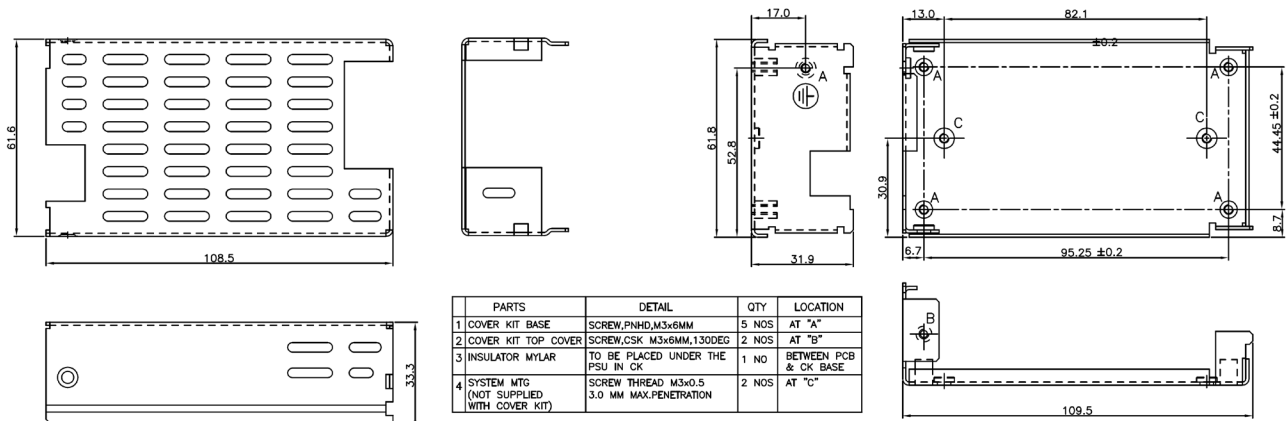
Mechanical Dimensions

Cover and Base Material EG(Zintec)/CRCA/GI 1.0mm thick (Powder coating/ Passivation/ ED coating black)

Marked A: PCB MTG; B: COVER MTG; C: SYSTEM MTG, M3 Thread

All dimensions are in mm. General tolerance :+/-1.0

Mechanical Drawing



*ITEM NO 3 PART DETAILS.

MANUFACTURER	MPN	DESCRIPTION
DUPONT TEVIN FILMS USLP	MYLAR M031	POLYETHYLENE TERPHTHALTE(PET)MYLAR MIN THK 0.25MM,VTM-2

WLP225-CK.
MECHANICAL OUTLINE DIMENSIONS.