



International CE Transformers EcoTran Series

- Power 105 VA to 450 VA
- Superior isolation with no exposed metallic surfaces
- Touch safe terminals (IP20)



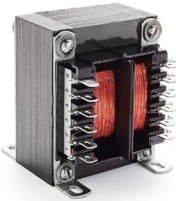
Split Bobbin

- Power 2.4 VA to 100 VA
- Dual or triple output option
- Lead wire option
- Single 115V Primary or Dual 115/230V versions available



Power Isolation DU Series

- Power 250 VA to 10,000 VA (autotransformer)
- Multiple taps for wide voltage range
- Step-up/Step-down/Auto-transformer



International Series A41 Series

- Power 25 VA to 175 VA
- Provides high isolation
- Lead wires option is available



Power In The Round STP & STPA Series

- Power 100 VA to 2000 VA
- Supplied with mounting hardware set
- Available with electrostatic shield
- Linear and auto versions available



Super High Efficiency SHE Series

- Power 250 VA to 2500 VA
- >97.5% efficiency rating
- Touch safe terminals (IP20)



International Power MPI Series

- Power 200 VA to 900 VA
- Leakage current @ <50 micro amps
- Touch safe terminals (IP20)



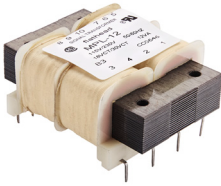
International Series 14A Series

- Power 2.5 VA to 56 VA
- High isolation
- Dual Primary and Secondary Design



Class 2 Transformers CL2 Series

- Power 2.5 VA to 50 VA (for PCB mount series)
- Power 25 VA to 80 VA (for Chassis mount series)
- Inherently and non-inherently limited



Low Profile LP Series

- Power 2 VA to 48 VA
- Low profile
- Dual primaries 115/230 V, 50/60 Hz



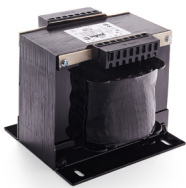
International "Low Profile" IF Series

- Power 2 VA to 30 VA
- Height 0.69 in to 1.39 in (17.5 mm to 35.3 mm)
- Encapsulated with dual primaries and secondaries



Miniature Low Power

- Power 1 VA to 24 VA
- Primaries - Single or dual primaries
- Dual Secondaries - Series or parallel
- Available with optional mounting bracket



HPI Series

- Power 1250VA to 3500VA
- Operating frequency 50/60Hz
- Touch Safe Terminals (IP20 Type)
- Constructed to meet UL 60601-1



Split Bobbin Low Power ST Series

- Power 1.1 VA to 36 VA
- Split bobbin construction for superior isolation
- Class 2 Agency Certified (for up to 24 V output)